

Software upgrade procedure

This method describes normal Software upgrade procedure when the device is properly working. Using this method, all user downloaded data and setting values are preserved.

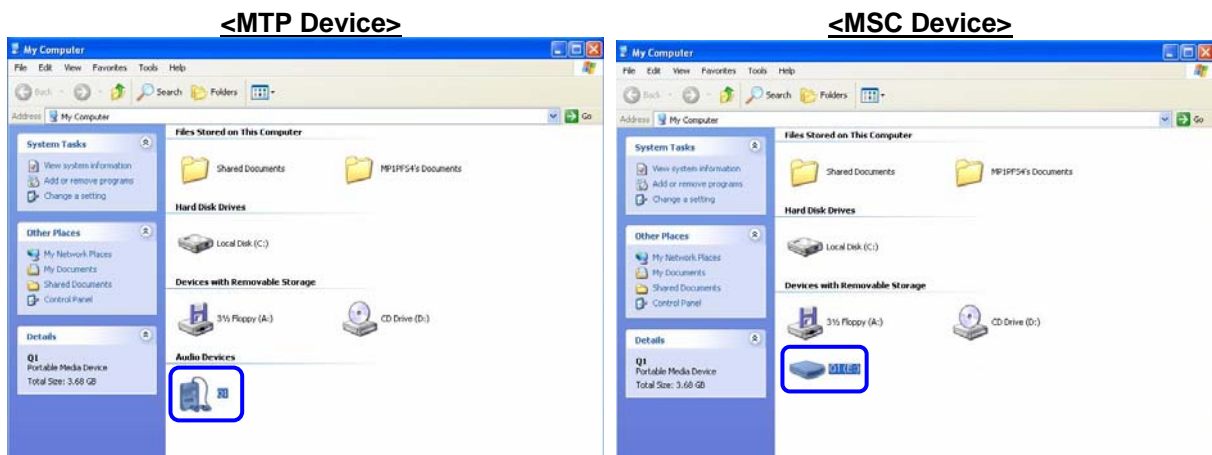
- 1) Download the latest firmware and extract it on your PC.
- 2) Copy the extracted files and paste them into the following directory of your player

<MTP Device : EU, USA, Canada, Australia>

- If WMP10 is installed on your PC : My Computer\YP-**\Internal Storage\Data
- If WMP11 is installed on your PC : My Computer\YP-**\Internal Storage

<MSC Device : Asia, CIS, South America, Turkey>

- If your player is MSC type : My Computer\YP-**



- 3) Disconnect the USB cable. The player will automatically turn off.
 - 4) Turn the player on. The player will display "Upgrading firmware" and when complete, will automatically turn off.
 - ※ Some models need 2 times "Turn on/off" for the successful firmware upgrade.
 - 5) Turn the player on again, and check the new software version in the Settings > System > About tab.
- If the battery is low, the upgrade will be not started.
In this case, you need to connect the USB or charging cord for starting the upgrade.